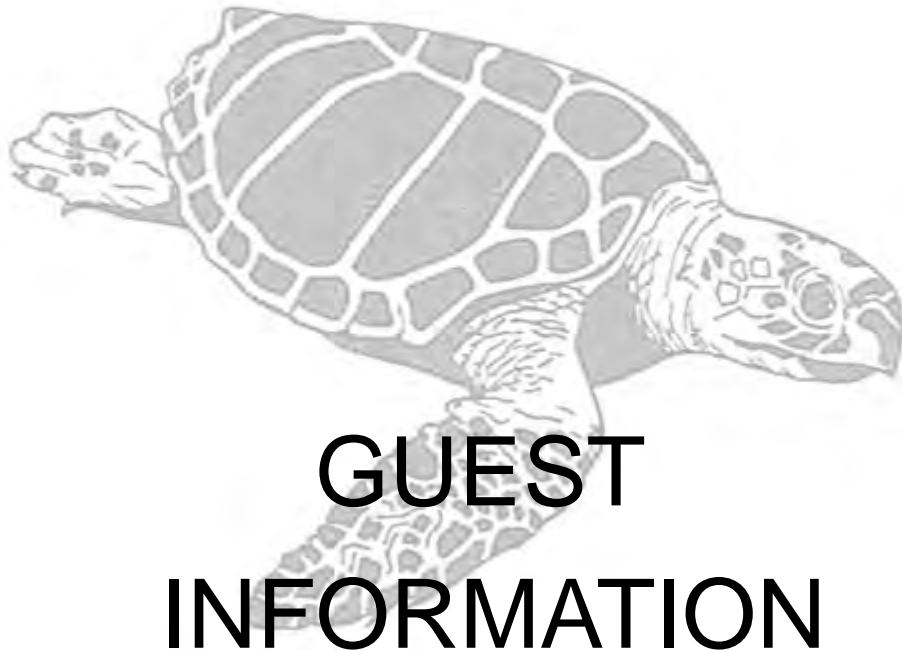




RELEASE AND UNWIND

Stuart

955 N.W. Flagler Avenue
Stuart, FL 34994



GUEST INFORMATION

Scan this QR code to view
the Guest Information Packet online



Toll Free: 1-888-LOGGER2

Direct: 772-692-4000 | Fax: 772-692-9878



RELEASE AND UNWIND

Directions to Loggerhead Club & Marina® – Stuart

By Water: (VHF Channel # 16)

- 🐢 BY WATER: (VHF Channel #16) Loggerhead Club & Marina-Stuart is located at marker 22A on the Okeechobee Waterway, seven miles from the St Lucie Inlet. We are on the North side of the channel, immediately east of the Roosevelt Bridge.

By Land:

- 🐢 From the north, take I-95 South to SR-70 West towards Okeechobee. Take ramp left for Florida's Turnpike South towards Miami. Exit off the turnpike at exit #142 for Port St. Lucie and travel east on Port St. Lucie Blvd. Travel 4 miles and turn right onto US-1. Turn left onto NW Wright Blvd, then your next right onto NW Flagler Avenue which travels along the water.
- 🐢 From the south, take I-95 North to exit SR-76 for S Kanner Highway. Continue on Kanner Highway for the next 6 miles, then take a slight left onto US-1. Cross over the bridge and take a right onto NW Wright Blvd, and then another right turn onto NW Flagler Avenue which travels along the water.

Marina Information

Dock/Rack Layout

- 🐢 This Loggerhead Marina location does not have dry storage racks, but has 300 wet slips that can accommodate boats up to 120 feet in length.

Marine Fuel

- 🐢 ValvTect marine specific 90 octane non ethanol gasoline and ValvTect marine grade diesel.

On- Site Utilities

- 🐢 Sanitation pump-out available to members at no extra charge.


Marina Depth

- 🐢 The Stuart Loggerhead Club and Marina is immediately adjacent to the Intracoastal Waterway and the entrance has approximately 5 foot draft at mean low tide.




RELEASE AND UNWIND

In the Event of an After-Hours Emergency

 The office phones are forwarded nightly to an answering service. The service will contact one of the Property Managers or other Loggerhead® Club & Marina official in the event of an emergency. If the incident involves injury or an unlawful act, please dial 911. Let the 911 operator know you are located at 955 NW Flagler Avenue, Stuart, FL 34994 and the location on the property. A call to the main office at 772-692-4000 is also appreciated.

Local Fixed Bridges

 Yes, the Roosevelt Bridge, just to the West of the marina has a marked clear height of 65 feet and the Palm City Bridge leading into the St. Lucie canal and the Okeechobee Waterway is fixed at 54 feet.

In the Area:

Airports

Martin County Airport	1871 SE Airport Rd, Stuart, FL	(772) 221-2301
Palm Beach International	Palm Beach International Airport 1000 Turnage Boulevard West Palm Beach, FL 33406	(561) 471-7420
Melbourne International Airport	1 Air Terminal Pkwy # 220, Melbourne, FL	(321) 723-6227

Bait & Tackle

Gordo's Bait and Tackle	494 SE Monterey Rd, Stuart, FL	(772) 220-0450
Snook-Nook Discount Bait	3595 NE Indian River Dr, Jensen Beach, FL	(772) 334-2145
Treasure Coast Rod and Reel	1508 NE Jensen Beach Blvd, Jensen Beach, FL	(772) 232-2537

Banks

Seacoast National Bank	815 Colorado Ave, Stuart, FL	(772) 221-2750
Wachovia Bank	301 SE Ocean Blvd, Stuart, FL	(772) 221-4400

Drugstores

CVS Pharmacy	2651 NW Federal Hwy, Stuart, FL	(772) 692-1285
Park Pharmacy	700 SE Ocean Blvd, Stuart, FL	(772) 287-3201



RELEASE AND UNWIND

Entertainment

Regal Cinemas Treasure Coast Mall 15 (9)	3290 NW Federal Hwy, Jensen Beach, FL	(772) 692-3177
--	---------------------------------------	----------------

Golf and Tennis

Eagle Marsh Golf Club	3869 NW Royal Oak Dr, Jensen Beach, FL	(772) 692-3322
Sandpiper Bay Golf Course	SE Morningside Blvd, Port Saint Lucie, FL	(561) 337-6638

Grocery Stores

Publix	746 SW Federal Hwy, Stuart, FL	(772) 221-3922
--------	--------------------------------	----------------

Health Care

Martin Memorial Medical Center	200 SE Hospital Ave, Stuart, FL	(772) 287-5200
Animal Medical Hospital	825 NW Dixie Hwy, Stuart, FL	(772) 692-0611

Health Clubs & Spa Services

Fitness Center	On Site at Marina	
LA Fitness	1901 NW FEDERAL HWY. STUART, FL	(772) 209-3010
Spirit Soul Spa, LLC	955 NW Flagler Ave, Stuart, FL 34994	(772) 341-2159

Hotels

Hampton Inn & Suites	1150 NW Federal Hwy, Stuart, FL	(772) 692-6922
Inn Shepard's Park B & B	601 SW Ocean Blvd, Stuart, FL	(772) 781-4244
Best Western	1209 SE Federal Hwy, Stuart, FL	(772) 287-6200

Liquor Stores

ABC Fine Wine & Spirits	1492 SE Federal Hwy, Stuart, FL	(772) 286-8626
A-1 Discount Beverage	464 SE Monterey Rd, Stuart, FL	(772) 286-8850



RELEASE AND UNWIND

Mail & Shipping

US Post Office	837 NW Federal Hwy, Stuart, FL	(772) 692-0533
UPS Store	2336 SE Ocean Blvd, Stuart, FL	(772) 221-9300

Marine Sales

Palm City Yachts	On Site	(772) 781-4480
Exclusive Yacht Group	140 Intracoastal Pointe Drive Suite 110, Jupiter, FL	(561) 745-2780
HMY Yacht Sales	290 N Dixie Hwy, Stuart, FL	(772) 692-7900

Marine Services

5 Star Cleaning		(772) 359-2483
Sea Tow	1050 NE Dixie Hwy., Jensen Beach, FL 34957	(772) 225-3144
Jackson Boat Works	17949 SE Federal Hwy, Jupiter, FL 33469	(561) 744-4900

Restaurants

Splash Poolside Grill	On Site	(772) 678-9564
CAPS Island Grill	10999 S Ocean Dr, Jensen Beach, FL	(772) 229-1777
Osceola St. Café	26 SW Osceola St, Stuart, FL	(772) 283-6116
Cassa Bella Restaurant	512 SW 3rd St, Stuart, FL	(772) 223-0077
Courtine's	514 N Dixie Hwy, Stuart, FL	(772) 692-3662

Salons

G Salon	100 NE Dixie Hwy, Stuart FL 34994	(772) 232-9022
The Cutting Quarters	2631 SE Ocean BLvd. Stuart FL 34996	(772) 283-9699

Transportation Services

David Major Taxi		(772) 283-8447
Dollar Rent-a-Car	1295 SE Dixie Cutoff Rd, Stuart, FL	(772) 286-1317
Hertz Rent-a-Car	1616 SE Federal Hwy, Stuart, FL	(772) 223-7716

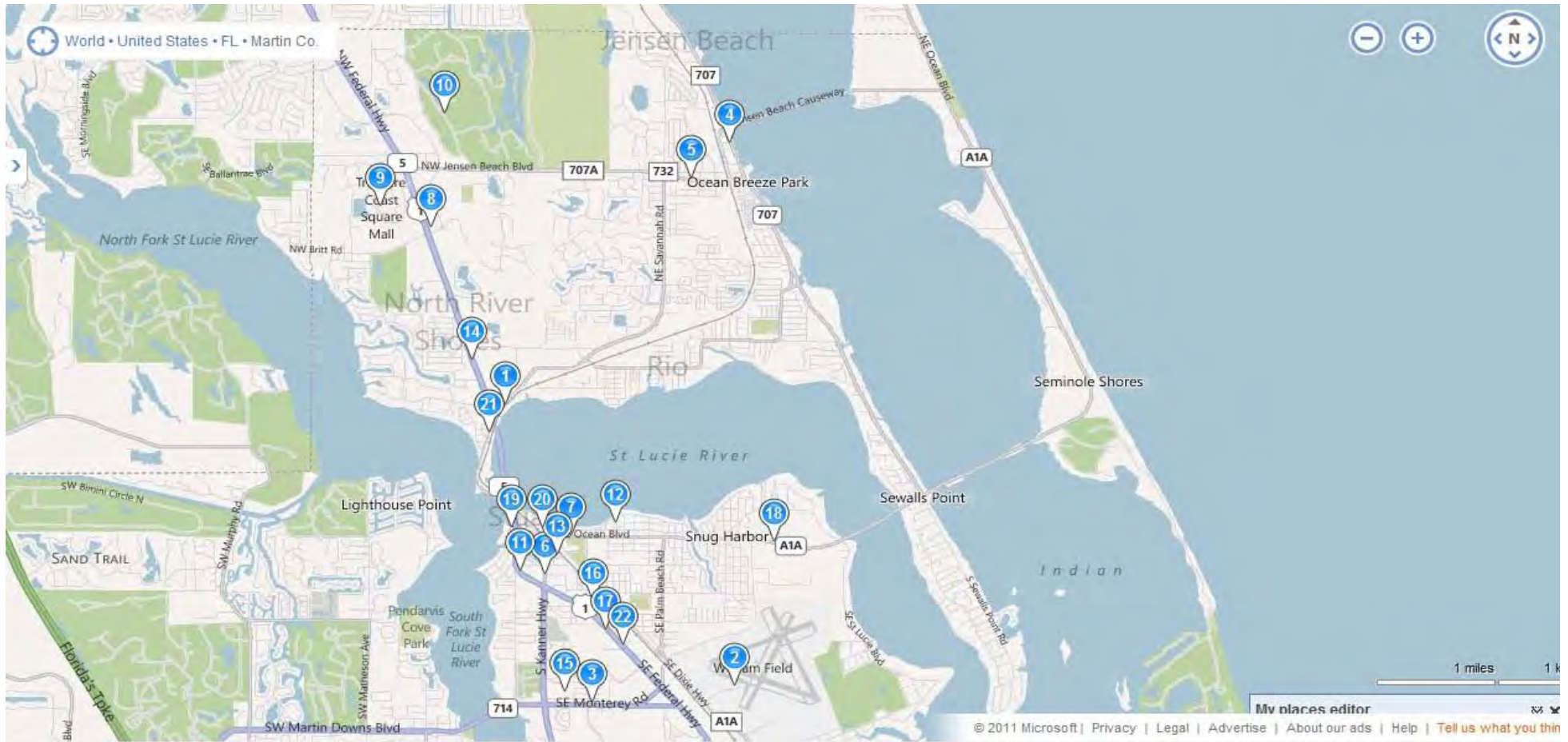
US Customs & Immigration

US Immigration and Customs Enforcement	1 East 11 th Street, Suite 323, Box #4, Riviera Beach, FL 33404	(561) 844-1703
--	--	----------------

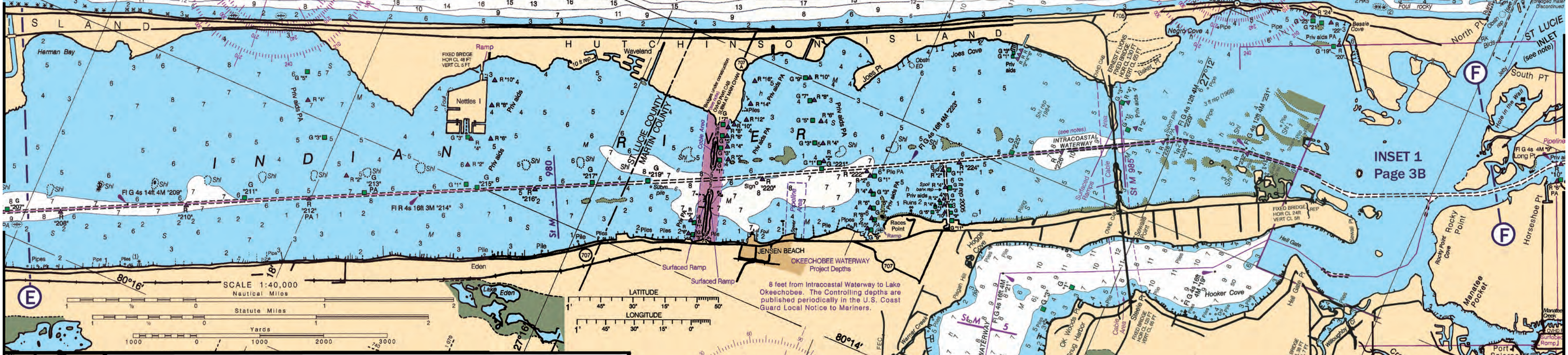
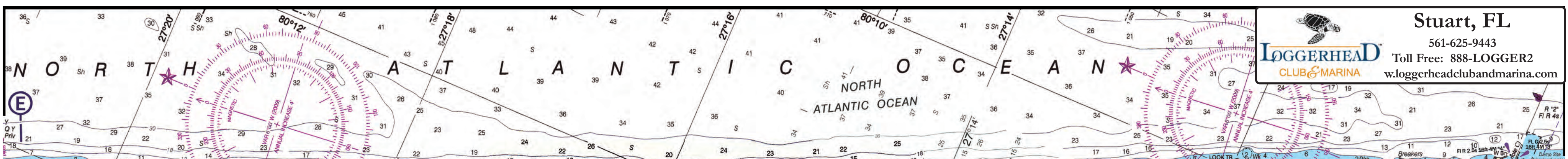
Toll Free: 1-888-LOGGER2

Direct: 772-692-4000 | Fax: 772-692-9878

Stuart Area Map



- | | | | |
|-------------------------------------|--------------------------------------|----------------------------------|---------------------------------|
| 1. Loggerhead Club & Marina - | 7. Wachovia Bank | 200 SE Hospital Ave, Stuart, FL | 18. UPS Store |
| 2. Martin County Airport-Witham | 301 SE Ocean Blvd, Stuart, FL | 13. Rosalind's Downtown Fitness | 2336 SE Ocean Blvd, Stuart, FL |
| 1871 SE Airport Rd, Stuart, FL | 8. CVS Pharmacy | 520 SE Dixie Hwy, Stuart, FL | 19. Casa Bella Restaurant |
| 3. Gordo's Bait & Tackle | 2651 NW Federal Hwy, Stuart, FL | 14. Hampton Inn & Suites Stuart- | 512 SW 3rd St, Stuart, FL |
| 494 SE Monterey Rd, Stuart, FL | 9. Regal Cinemas Treasure Coast | 1150 NW Federal Hwy, Stuart, FL | 20. Osceola Street Cafe |
| 4. Snook-Nook Discount Bait | 3318 NW Federal Hwy, Jensen Bch, FL | 15. A-1 Discount Beverage | 26 SW Osceola St, Stuart, FL |
| 3595 NE Indian River Dr, Jensen, FL | 10. Eagle Marsh Golf Club | 464 SE Monterey Rd, Stuart, FL | 21. Courtine's |
| 5. Treasure Coast Rod & Reel | 3869 NW Royal Oak Dr, Jensen Bch, FL | 16. Best Western Stuart | 514 N Dixie Hwy, Stuart, FL |
| 1508 NE Jensen Beach Blvd. | 11. Publix Super Market | 1209 SE Federal Hwy, Stuart, FL | 22. Hertz Rent-A-Car |
| 6. Seacoast National Bank | 746 SW Federal Hwy, Stuart, FL | 17. ABC Fine Wine & Spirits | 1616 SE Federal Hwy, Stuart, FL |
| 815 Colorado Ave, Stuart, FL | 12. Martin Memorial Medical Ctr | 1492 SE Federal Hwy, Stuart, FL | |



DISCLAIMER
This chart is published and distributed by U.S. Chart Services, Inc. U.S. Chart Services, Inc. has copied, cropped and edited data from OceanGrafix charts to produce this chart. Some of the copied data is copyright protected by OceanGrafix and is used with permission. OceanGrafix makes no claims that the copied data is accurate or suitable for the intended use of the recipient or purchaser and offers no warranty concerning the chart's fitness for use. The data contained in this chart may not be reproduced in any form without written permission from U.S. Chart Services, Inc. and OceanGrafix. OceanGrafix, U.S. Chart Services, Inc., as well as advertisers and distributors of this product can not be responsible for any errors or omissions which may occur in the printing of this imaged product. All persons using this product are CAUTIONED to use the practices of good seamanship and consult Notice to Mariners when using this information.

WARNING
The prudent mariner will not rely solely on any single aid to navigation, particularly on floating aids. See U.S. Coast Guard Light List and U.S. Coast Pilot for details.

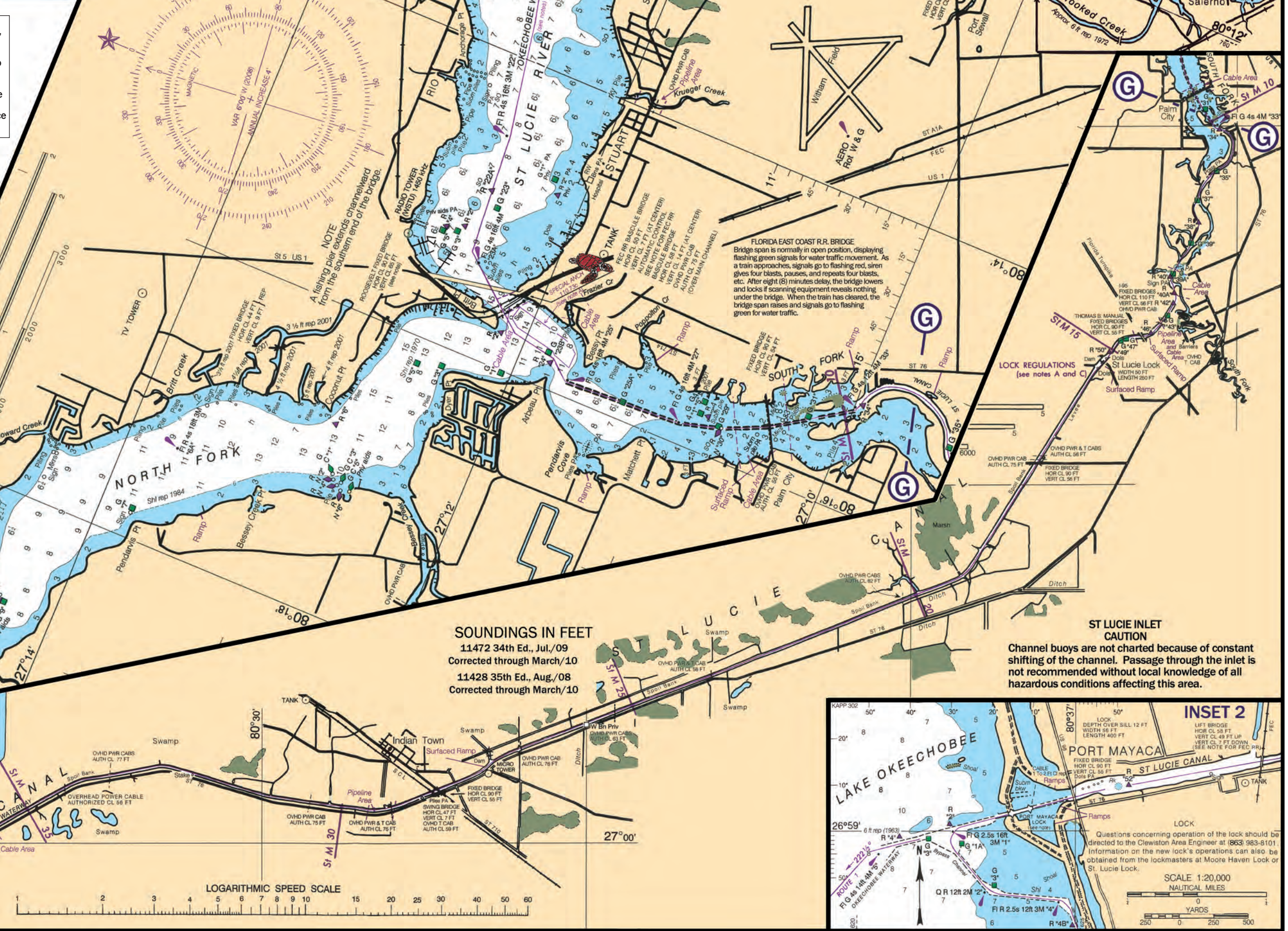
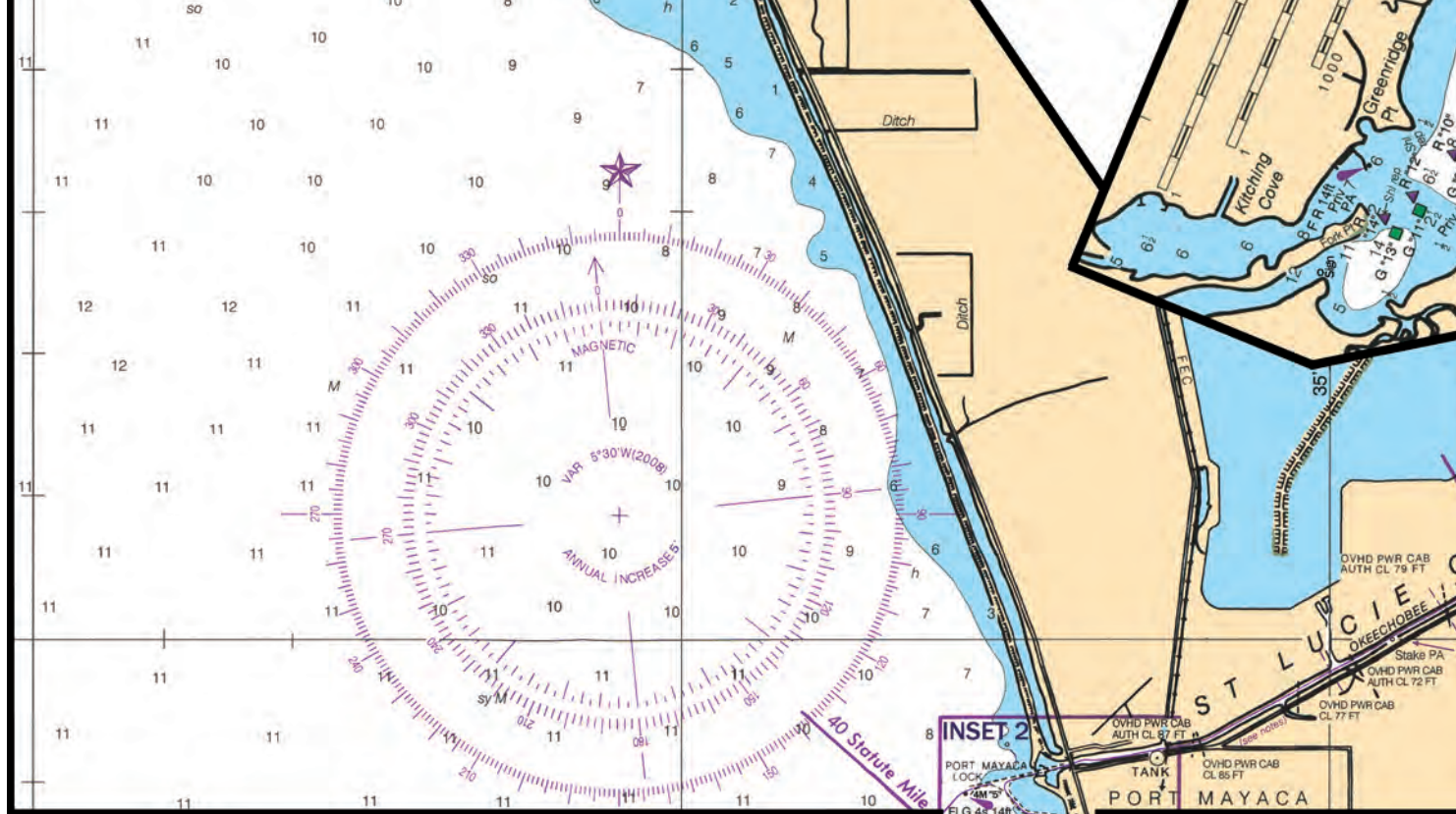
AIDS TO NAVIGATION
Consult U.S. Coast Guard Light List for supplemental information concerning aids to navigation.

CAUTION
Temporary changes or defects in aids to navigation are not indicated on this chart. See Local Notice to Mariners.

CAUTION
Improved channels shown by broken lines are subject to shoaling, particularly at the edges.

ABBREVIATIONS
For complete list of Symbols and Abbreviations, see Chart No. 1.

CAUTION
Fixed and floating obstructions, some submerged, may exist within the magenta tinted bridge construction area. Mariners are advised to proceed with caution.



SOUNDINGS IN FEET
11472 34th Ed., Jul./09
Corrected through March/10
11428 35th Ed., Aug./08
Corrected through March/10

ST LUCIE INLET
CAUTION
Channel buoys are not charted because of constant shifting of the channel. Passage through the inlet is not recommended without local knowledge of all hazardous conditions affecting this area.

